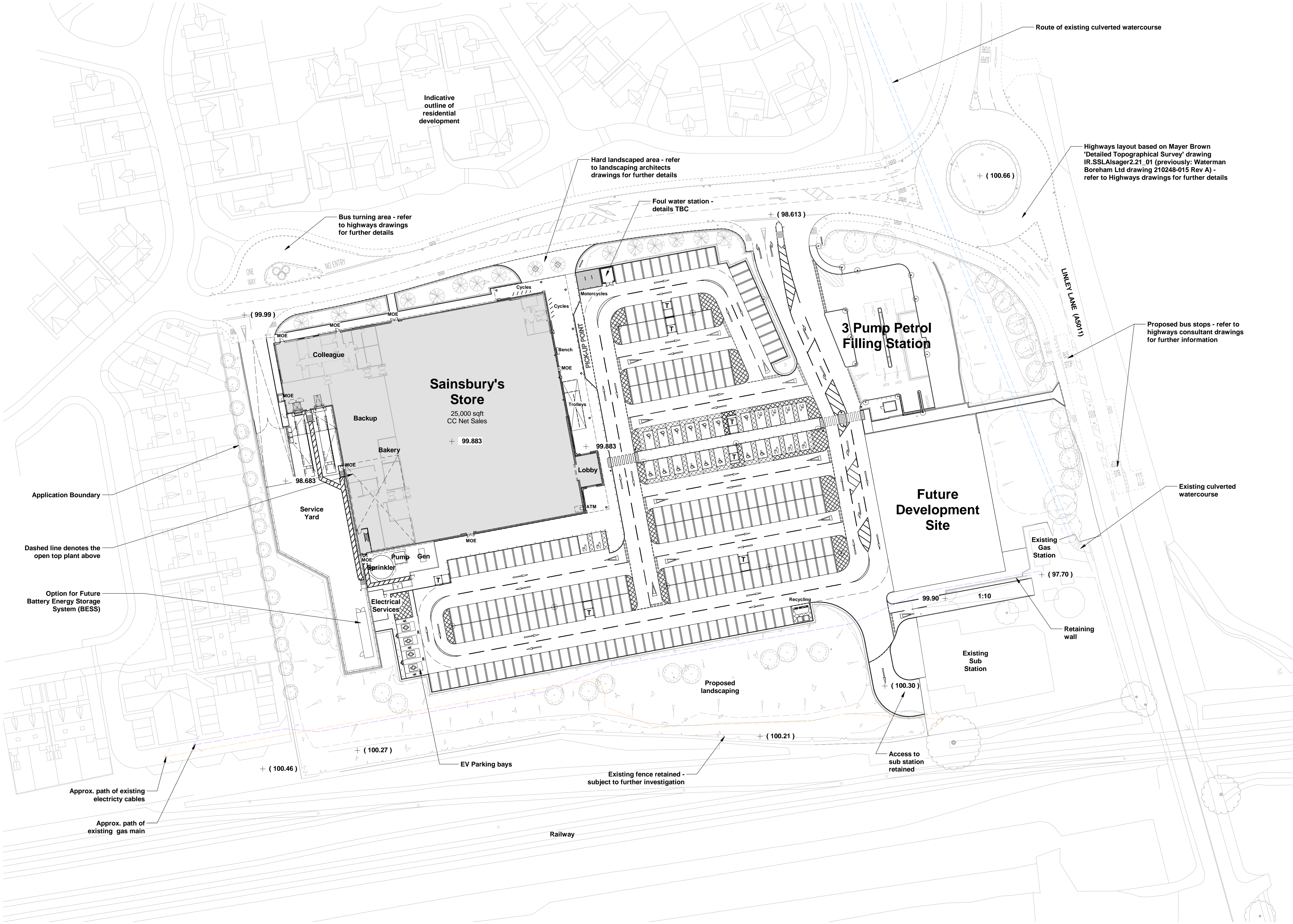


24/0130C

FORMER TWYFORD
BATHROOMS SITE, LINLEY
LANE, ALSAGER, ST7 2DF



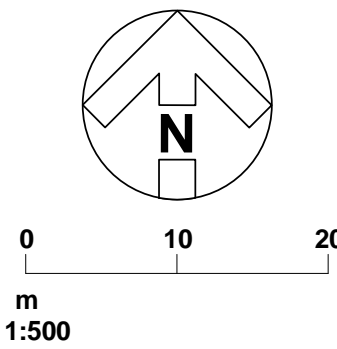
NOTES

THIS DRAWING IS NOT TO BE USED FOR CONSTRUCTION PURPOSES.

DO NOT DIMENSION FROM THIS DRAWING.

FIRE STRATEGY SUBJECT TO DESIGN DEVELOPMENT.

DRAINAGE STARTEGY & RAIN WATER PIPES SUBJECT TO DESIGN DEVELOPMENT.



FOODSTORE AREAS	
NET SALES (CC) AREA	25,000 ft ² / 2,323 m ²
TOTAL GROSS INTERNAL AREA	40,957 ft ² / 3,805 m ²
TOTAL GROSS EXTERNAL AREA	41,678 ft ² / 3,872 m ²

CAR PARKING	
STANDARD AND PARENT & CHILD	230
DISABLED	15
EV CHARGING BAYS	4
TOTAL	249
AREA DESIGNATED FOR MOTORCYCLES	
10 SHEFFIELD CYCLE STANDS (20 SPACES)	

REVISION M	BY MIC	CHECKED MJS	DATE 10/01/2024
Site amended in line with latest SDG2 proposed scheme drawing SK018 Rev W. Store lobby repositioned in line with SSL SDG3 approved Store Plan rev B.			
REVISION L	BY RHM	CHECKED	DATE 09/04/2020
Trees within car park removed. Bollards added. Motorcycles relocated. Pond omitted. Landscaping cut back at pedestrian entrance. New store plan shown.			
REVISION K	BY RHM	CHECKED	DATE 27/02/2020
As-built new access road & bus stops shown. Car Parking total 239 spaces, previously 302 spaces. Area for future development in place of car parking at front of site. Pond in lieu of opened up culvert. PFS reduced from 6 to 4 pumps, jet wash in lieu of car wash & kiosk removed. Public realm, shared road surface & side canopy removed, soft landscape area increased. Service yard area reduced. Sprinkler tank, substation & generator relocated. Landscaped raised mounds shown along South boundary. Biomass boiler removed. Recycling centre moved closer to access road. 5 additional cycle hoops. Internal store layout changed, including Argos. Live gas/electric services removed/relocated. FFL shown 99.883m, previously 100.000m			
REVISION J	BY SR	CHECKED	DATE 21/08/2013
Bus shelter relocated			
REVISION H	BY SR	CHECKED	DATE 05/08/2013
Minor amendments to landscaping			
REVISION G	BY SR	CHECKED	DATE 20/06/2013
Cafe amended, car parking amended to suit.			
REVISION F	BY CB	CHECKED	DATE 17/05/2013
Cafe added, car parking amended to suit. 12 parking spaces removed.			
REVISION E	BY SR	CHECKED	DATE 29/11/2012
GOL removed			
REVISION D	BY SR	CHECKED	DATE 03/09/2012
Issued for planning			
REVISION C	BY SR	CHECKED	DATE 01/08/2012
Landscaping amended			
REVISION B	BY SR	CHECKED	DATE 26/07/2012
Minor amendments to PFS			
REVISION A	BY SR	CHECKED	DATE 23/07/2012
Red line boundary amended.			
REVISION *	BY SR	CHECKED	DATE 18/07/2012
Initial issue.			

STATUS

PLANNING

CLIENT

Sainsbury's

PROJECT

NEW STORE
LINLEY LANE
ALSAGER

TITLE

PROPOSED SITE PLAN

Hadfield Cawkwell Davidson

Broomgrove Lodge, 13 Broomgrove Rd, Sheffield, S10 2LZ T 0114 266 8181 www.hcd.co.uk

HCD PROJECT NO 2010-071	SCALE 1 : 500 @ A1	REV M
ASSET ID / PROGRAMME CODE XA-0207-0065	ORIGINATOR HCD\Z07	LEVEL 00
TYPE / ROLE / NUMBER A-PL-103		

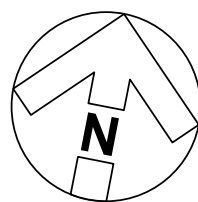
C:\temp\XA-0207_0065-HCD-206-226-MS-A-2001_W523_Msk@HCD\HY | © HCD

THIS DRAWING IS NOT TO BE USED FOR CONSTRUCTION PURPOSES.

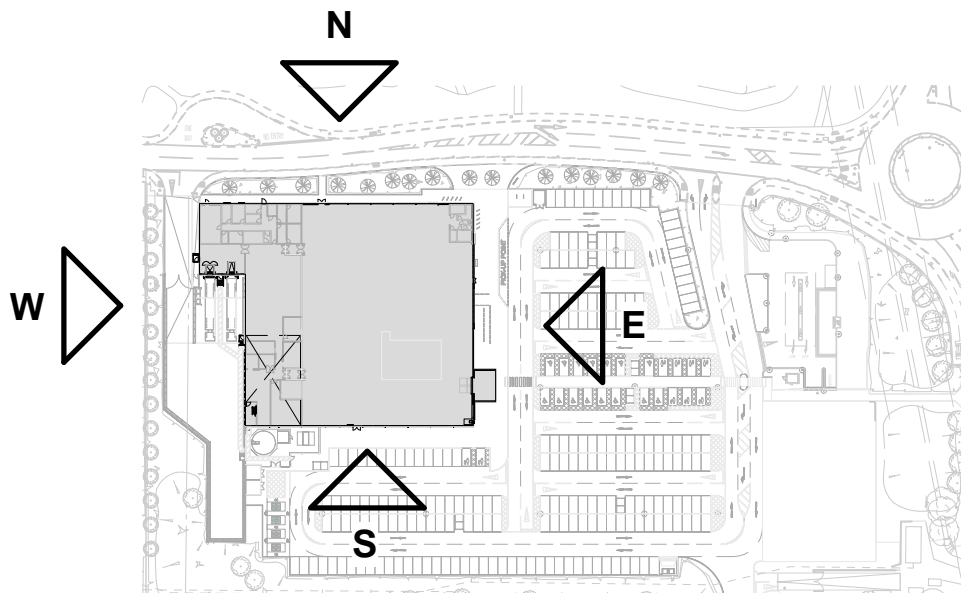
DO NOT DIMENSION FROM THIS DRAWING.

FIRE STRATEGY SUBJECT TO DESIGN DEVELOPMENT.

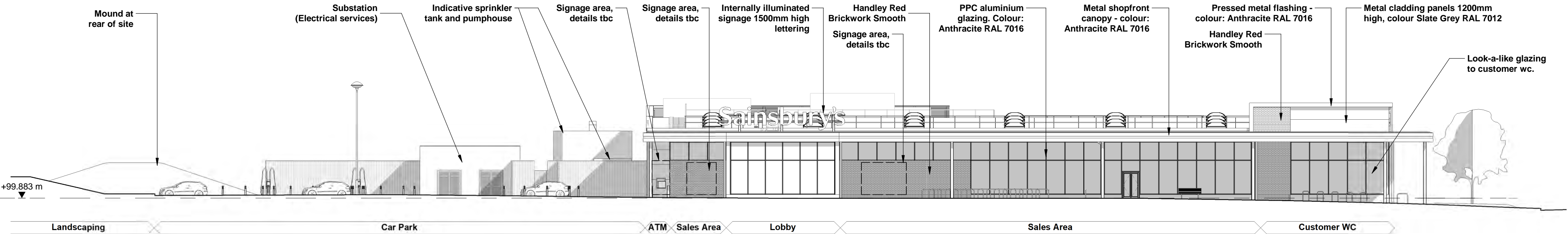
DRAINAGE STARTEGY & RAIN WATER PIPES SUBJECT TO DESIGN DEVELOPMENT.



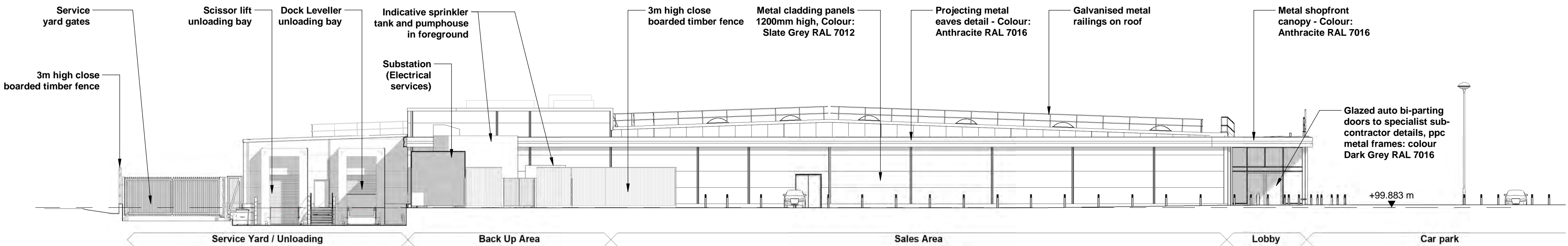
0 5 10
m
1:200



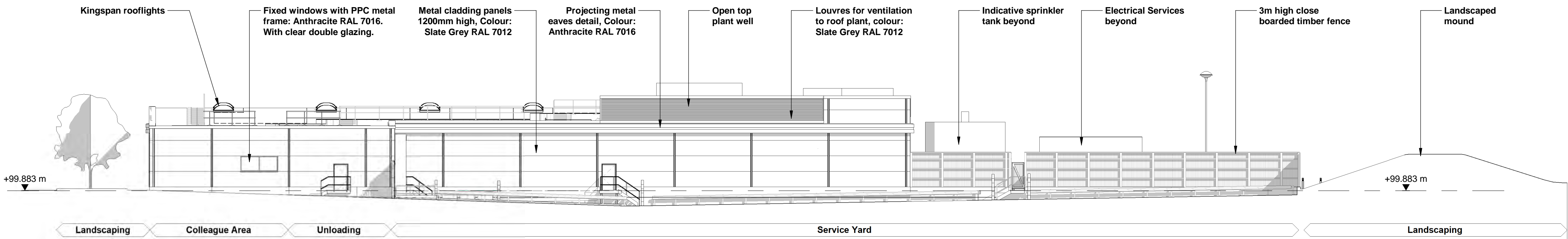
KEY PLAN



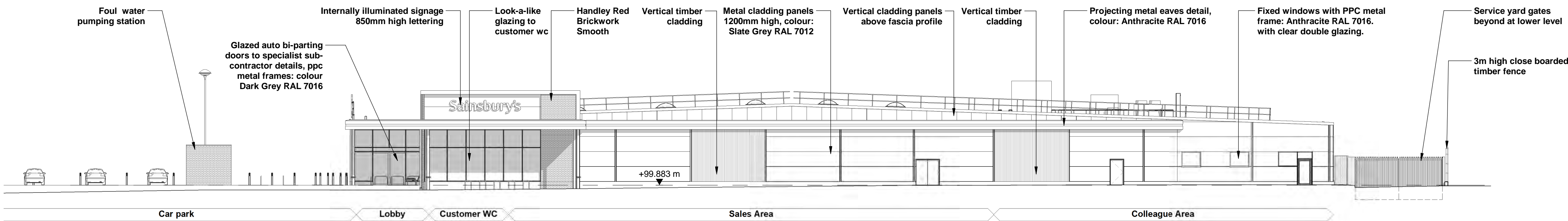
EAST ELEVATION



SOUTH ELEVATION



WEST ELEVATION



NORTH ELEVATION

REVISION M BY MIC CHECKED MJS DATE 10/01/2024

Elevations updated to suit site amended in line with latest SDG2 proposed scheme drawing SK018 Rev W, removal of cafe, & store lobby repositioned in line with SSL SDG3 approved Store Plan rev B.

REVISION L BY SR CHECKED DATE 10/06/2013

Minor amendments following client feedback

REVISION K BY SR CHECKED DATE 07/06/2013

Cafe glazing amended

REVISION J BY CB CHECKED DATE 24/05/2013

Size of coffee bar increased. Glazing amended to suit.

REVISION H BY CB CHECKED DATE 17/05/2013

Cafe added, car parking amended to suit. 12 car parking spaces removed.

REVISION G BY SR CHECKED DATE 16/11/2012

GOL removed

REVISION F BY SR CHECKED DATE 03/09/2012

Issued for planning

REVISION E BY SR CHECKED DATE 13/07/2012

Minor amendments to signage

REVISION D BY CB CHECKED DATE 29/06/2012

Fire escape relocated

REVISION C BY SR CHECKED DATE 28/06/2012

Amended following client feedback

REVISION B BY SR CHECKED DATE 26/06/2012

Minor amendments following coordination with store plan

REVISION A BY SR CHECKED DATE 26/06/2012

Amendments to GOL

REVISION * BY SR CHECKED DATE 18/07/2012

Initial issue.

STATUS

PLANNING

CLIENT

Sainsbury's

PROJECT

NEW STORE
LINLEY LANE
ALSAGER

TITLE

PROPOSED ELEVATIONS

Hadfield Cawkwell Davidson

Broomgrove Lodge, 13 Broomgrove Rd, Sheffield, S10 2LZ T 0114 266 8181 www.hcd.co.uk

HCD PROJECT NO. 2010-071 SCALE 1:200 @ A1 REV M

ASSET ID: PROGRAMME CODE ORIGINATOR DIVISION LEVEL TYPE: ROLE: NUMBER

XA-0207-0065 HCD|Z07| 00 A-PL-107

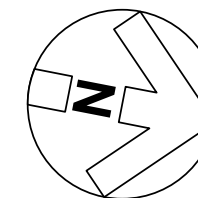
C:\temp\XA-0207_0065-HCD-206-ZZ-MS-A-2001_W523_Msk@HCD.rvt | © HCD

THIS DRAWING IS NOT TO BE USED FOR CONSTRUCTION PURPOSES.

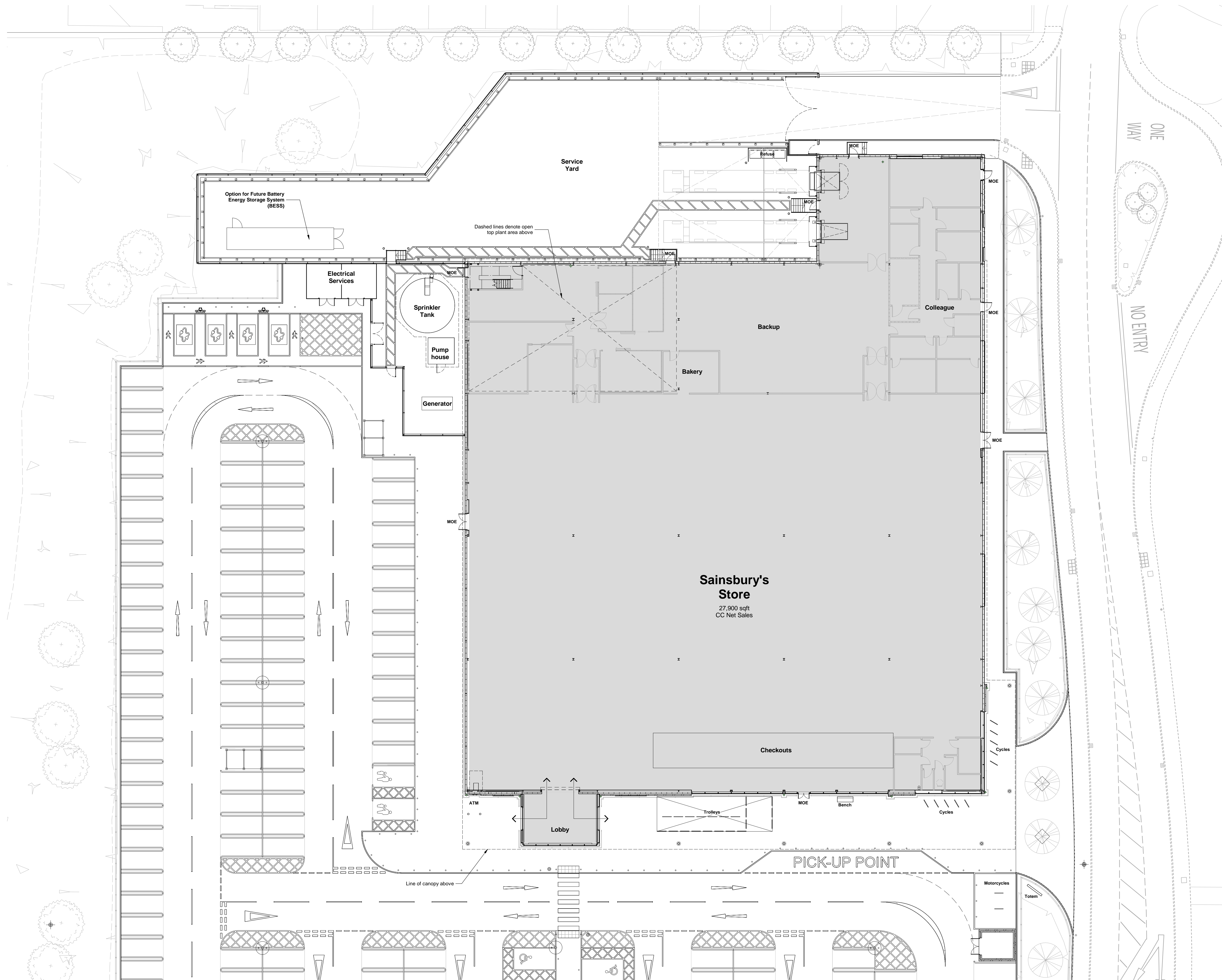
DO NOT DIMENSION FROM THIS DRAWING.

FIRE STRATEGY SUBJECT TO DESIGN DEVELOPMENT.

DRAINAGE STARTERGY & RAIN WATER PIPES SUBJECT TO DESIGN DEVELOPMENT.



0 5 10
m
1:200



REVISION **F** BY MIC CHECKED: MJS DATE: 10/01/2024

Site amended in line with latest SDG2 proposed scheme drawing SK018 Rev W.
Store plan amended to suit removal of cafe, & lobby repositioned in line with SSL
SDG3 approved Store Plan rev B.

REVISION **E** BY SR CHECKED: DATE: 05/08/2013

Minor amendments to landscaping

REVISION **D** BY SR CHECKED: DATE: 20/06/2013

Car parking and cafe amended

REVISION **C** BY CB CHECKED: DATE: 17/05/2013

Cafe added, car parking amended to suit. 12 car parking spaces removed.

REVISION **B** BY SR CHECKED: DATE: 29/11/2012

Highways updated. GOL removed

REVISION **A** BY SR CHECKED: DATE: 03/09/2012

Issued for planning

REVISION ***** BY SR CHECKED: DATE: 27/06/2012

Initial issue.

STATUS

PLANNING

CLIENT

Sainsbury's

PROJECT

**NEW STORE
LINLEY LANE
ALSAGER**

TITLE

PROPOSED GROUND FLOOR PLAN

Hadfield Cawkwell Davidson

Broomgrove Lodge, 13 Broomgrove Rd, Sheffield, S10 2LZ T 0114 266 8181 www.hcd.co.uk

HCD PROJECT NO. 2010-071 SCALE 1:200 @ A1 REV F

ASSET ID: PROGRAMME CODE ORIGINATOR DIVISION LEVEL TYPE: ROLE - NUMBER
XA-0207-0065 | HCD | Z07 | 00 | A-PL-104

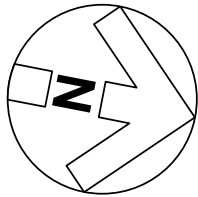
C:\temp\XA-0207_0065-HCD-206-ZZ-MS-A-2001_W523_Msk@HCD.rvt | © HCD

THIS DRAWING IS NOT TO BE USED FOR CONSTRUCTION PURPOSES.

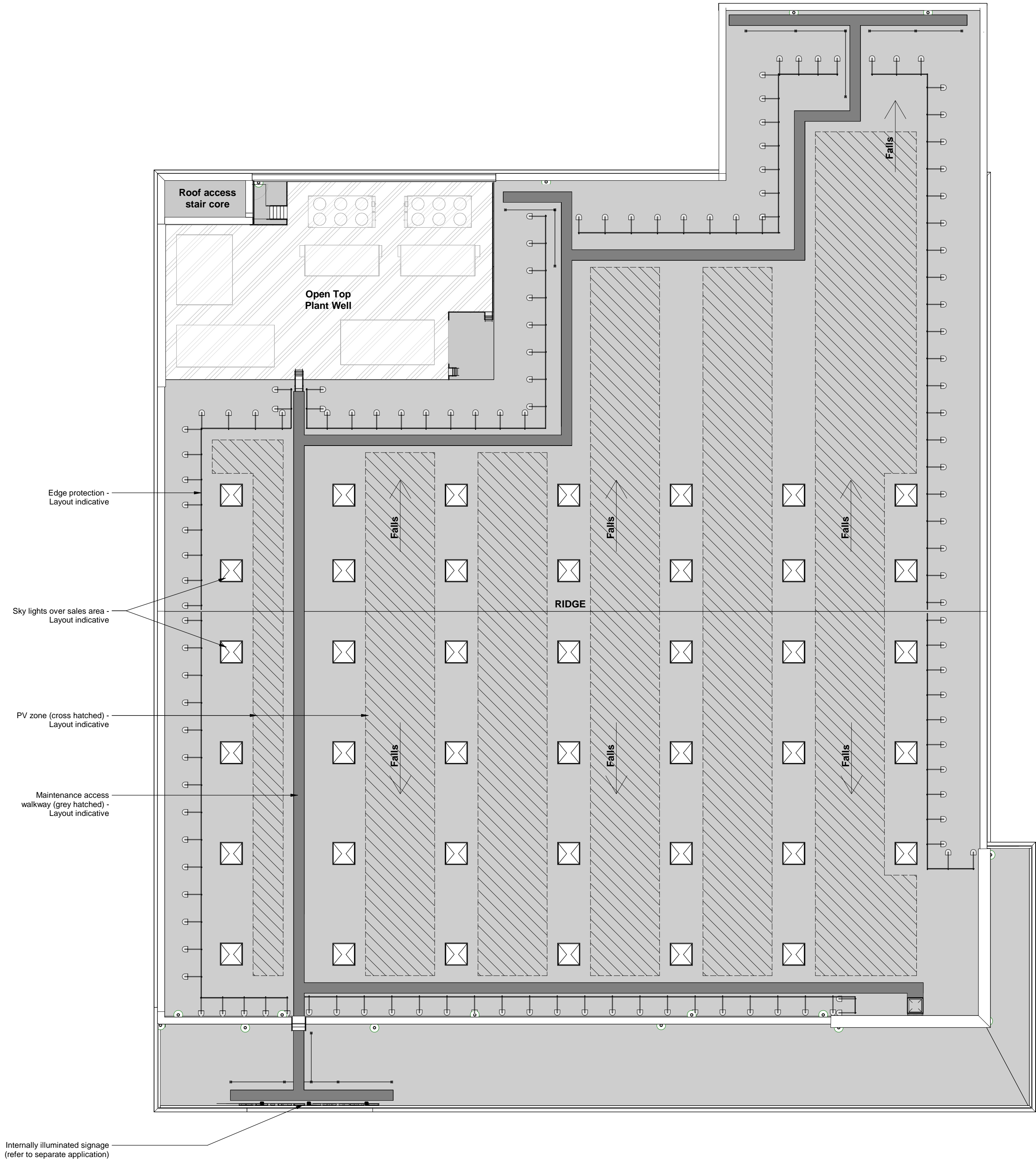
DO NOT DIMENSION FROM THIS DRAWING.

FIRE STRATEGY SUBJECT TO DESIGN DEVELOPMENT.

DRAINAGE STARTEGY & RAIN WATER PIPES SUBJECT TO DESIGN DEVELOPMENT.



0 5 10
m
1:200



REVISION	E	BY	MIC	CHECKED	MJS	DATE	10/01/2024
Roof plan & canopy updated to suit amended store lobby repositioned in line with SSL SDG3 approved Store Plan rev B, and removal of cafe.							
REVISION	D	BY	SR	CHECKED		DATE	20/06/2013
Roof above cafe amended							
REVISION	C	BY	CB	CHECKED		DATE	17/05/2013
Cafe added, car parking amended to suit. 12 car parking spaces removed.							
REVISION	B	BY	SR	CHECKED		DATE	29/11/2012
GOL removed							
REVISION	A	BY	SR	CHECKED		DATE	03/09/2012
Issued for planning							
REVISION	*	BY	SR	CHECKED		DATE	28/06/2012
Initial issue.							

STATUS	PLANNING
CLIENT	

Sainsbury's

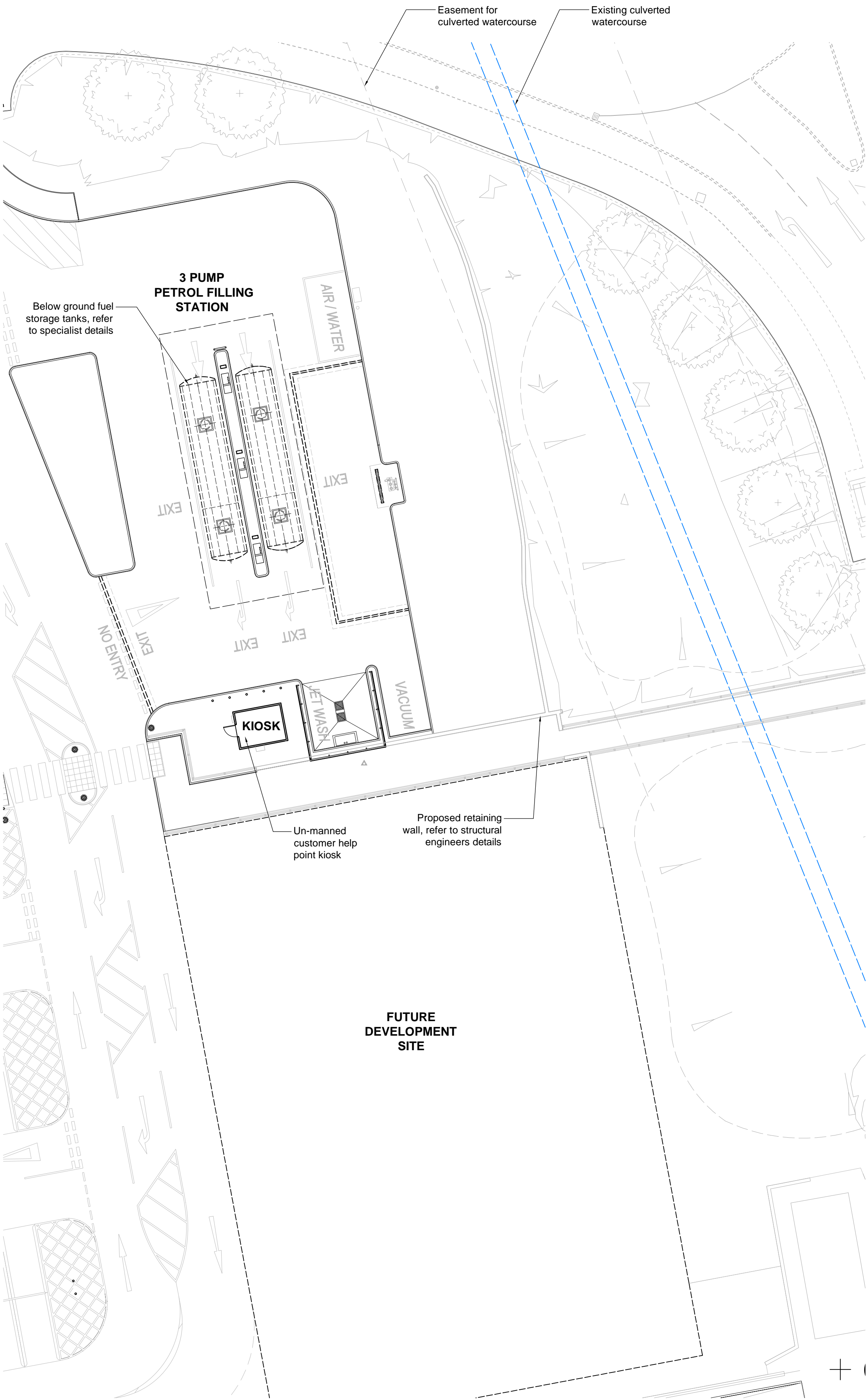
PROJECT	NEW STORE LINLEY LANE ALSAGER
TITLE	

PROPOSED ROOF PLAN

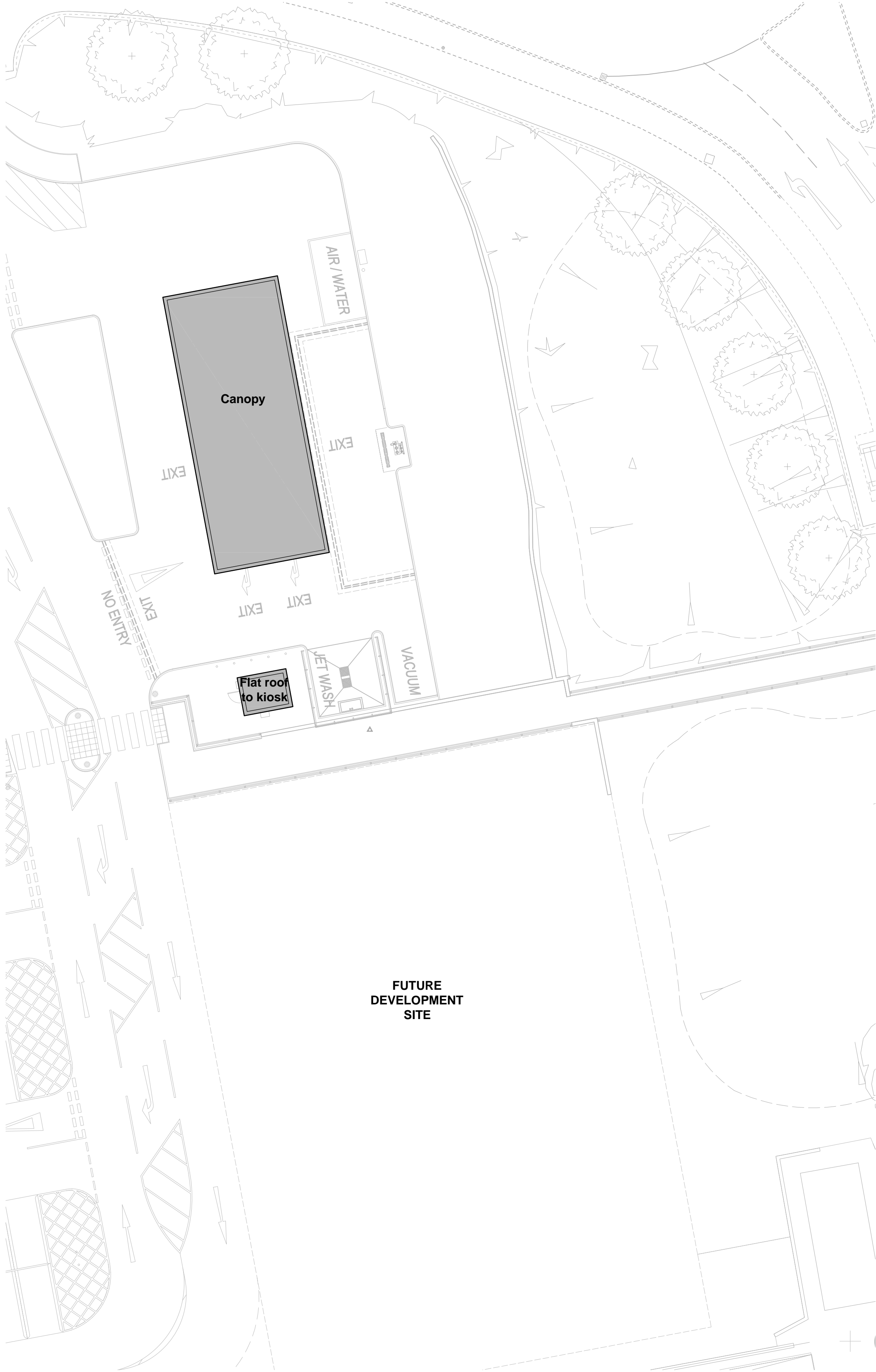
Hadfield Cawkwell Davidson

Broomgrove Lodge, 13 Broomgrove Rd, Sheffield, S10 2LZ T 0114 266 8181 www.hcd.co.uk

HCD PROJECT NO. 2010-071	SCALE 1 : 200 @ A1	REV. E
ASSET ID / PROGRAMME CODE XA-0207-0065	ORIGINATOR / DIVISION HCD Z07 00	LEVEL / TYPE / ROLE - NUMBER A-PL-105

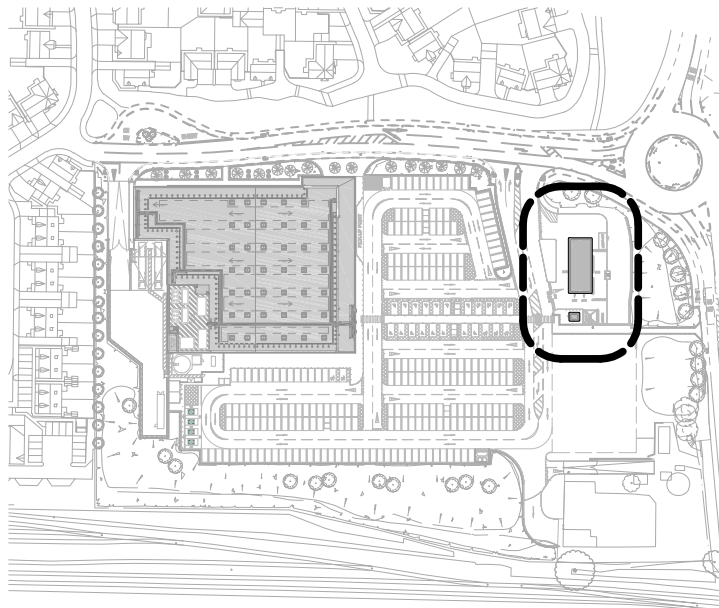
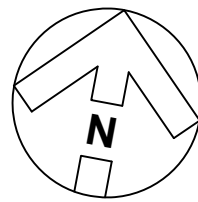
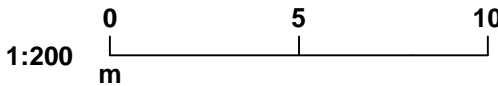


Ground Floor Plan



Roof Plan

NOTES:
THIS DRAWING IS NOT TO BE USED FOR CONSTRUCTION PURPOSES.
DO NOT DIMENSION FROM THIS DRAWING.
FIRE STRATEGY SUBJECT TO DESIGN DEVELOPMENT
PROPOSED LEVELS SUBJECT TO DESIGN DEVELOPMENT
DRAINAGE STRATEGY & RAIN WATER PIPES SUBJECT TO DESIGN DEVELOPMENT



REVISION: H	BY: MIC	CHECKED:	DATE: 10/01/2024
PFS layout amended to 3 Pump design.			
REVISION: G	BY: SR	CHECKED:	DATE: 21/08/2013
Bus shelter relocated			
REVISION: F	BY: SR	CHECKED:	DATE: 05/08/2013
Minor amendments to landscaping			
REVISION: E	BY: SR	CHECKED:	DATE: 30/06/2013
Minor amendments to Kiosk			
REVISION: D	BY: CB	CHECKED:	DATE: 17/05/2013
Cafe added, car parking amended to suit. 12 car parking spaces removed.			
REVISION: C	BY: SR	CHECKED:	DATE: 29/11/2012
Key plan amended			
REVISION: B	BY: SR	CHECKED:	DATE: 03/09/2012
Issued for planning			
REVISION: A	BY: SR	CHECKED:	DATE: 26/07/2012
Minor amendments to kiosk and car wash			
REVISION: *	BY: SR	CHECKED:	DATE: 23/07/2012
Initial issue			

PLANNING

PLOT DATE:

Sainsbury's

CLIENT:

LINLEY LANE
ALSAGER

PROJECT:

PROPOSED
PETROL FILLING STATION
PLANS

DRAWING: SCALE: DATE:
DRAWN BY: SR 1:200 @ A1 JULY 2012

Hadfield Cawkwell Davidson

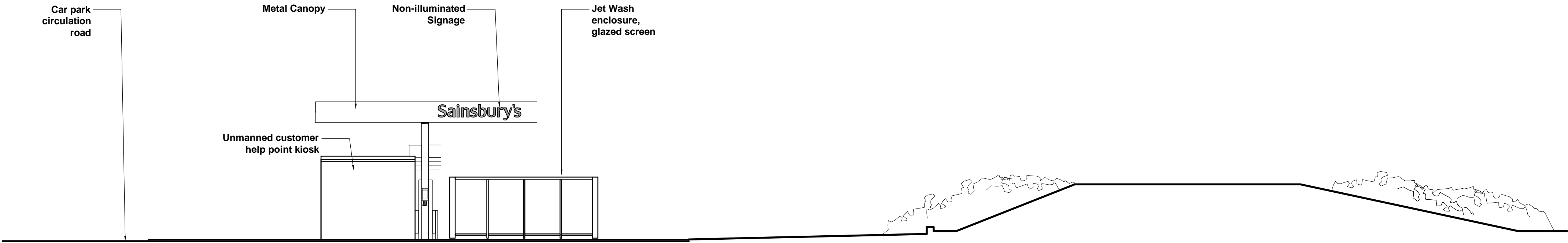
Broomgrove Lodge, 13 Broomgrove Rd, Sheffield, S10 2LZ T 0114 266 8181 www.hcd.co.uk

ARCHITECTURE | ENGINEERING | INTERIOR DESIGN | MASTERPLANNING | URBAN DESIGN

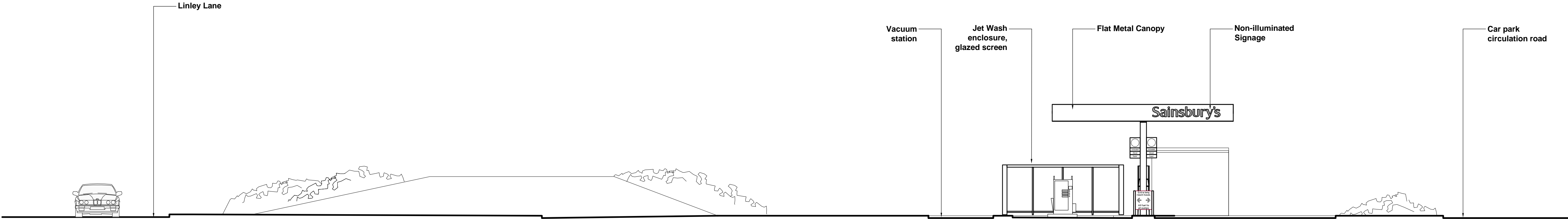
DISCIPLINE: JOB NO: DRAWING NO: REV:

ARCH / 2010-071 / A-PL-108 / H

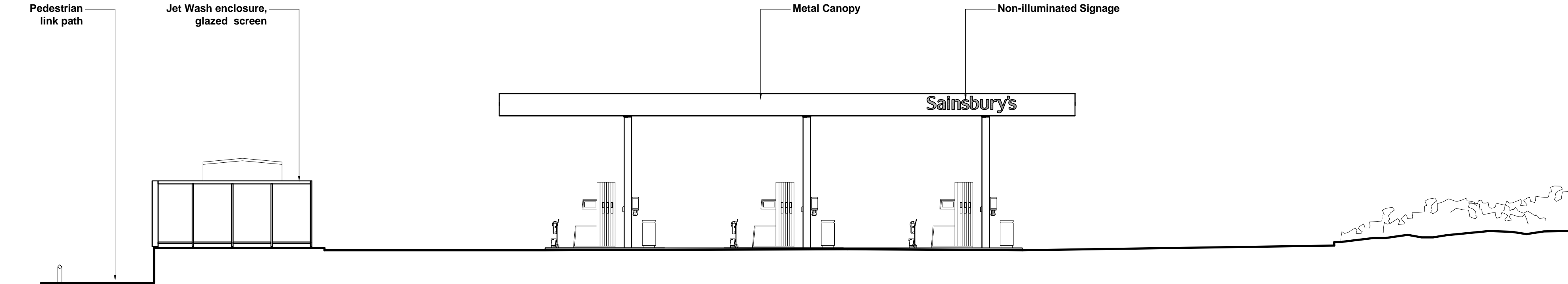
S:\Architecture\2010-071\Drawings\DR - Plot Sheets\2024 Planning amendments\A-PL-108_proposed PFS plan.dwg



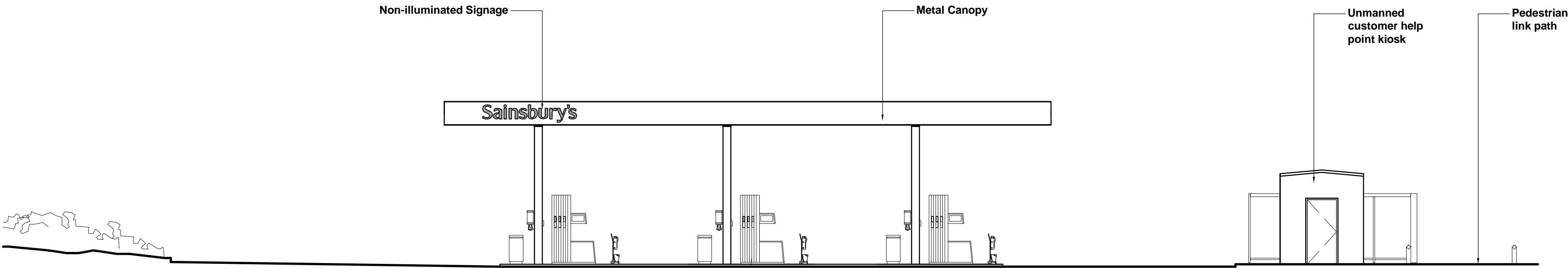
South Elevation



North Elevation

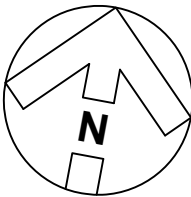
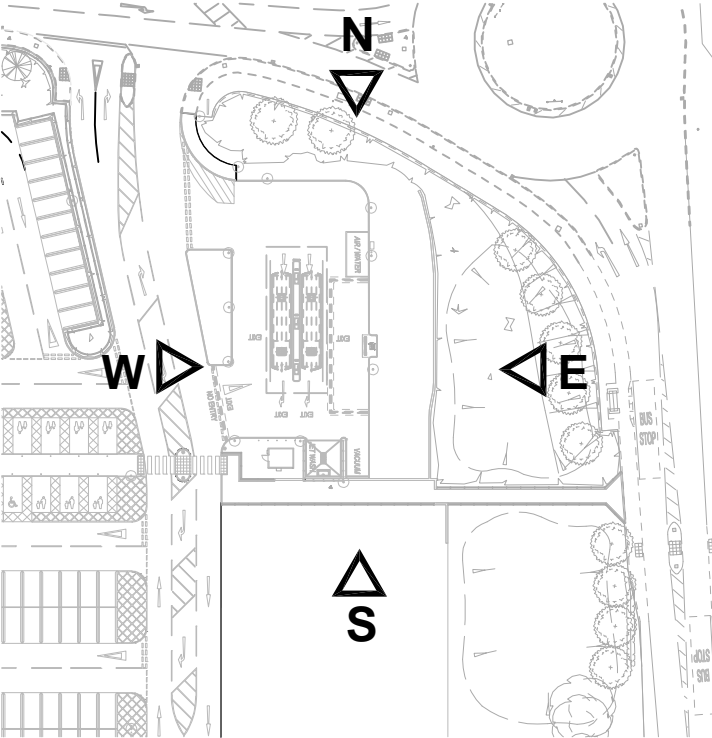
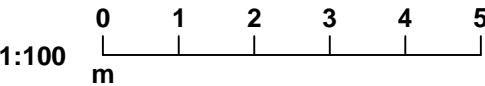


East Elevation



West Elevation

NOTES:
THIS DRAWING IS NOT TO BE USED FOR CONSTRUCTION PURPOSES.
DO NOT DIMENSION FROM THIS DRAWING.
FIRE STRATEGY SUBJECT TO DESIGN DEVELOPMENT
PROPOSED LEVELS SUBJECT TO DESIGN DEVELOPMENT
DRAINAGE STRATEGY & RAIN WATER PIPES SUBJECT TO DESIGN DEVELOPMENT



REVISION: D	BY: MIC	CHECKED:	DATE: 10/01/2024
PFS layout amended to 3 Pump design.			
REVISION: C	BY: SR	CHECKED:	DATE: 20/06/2013
Minor amendments to kiosk			
REVISION: B	BY: SR	CHECKED:	DATE: 03/09/2012
Issued for planning			
REVISION: A	BY: SR	CHECKED:	DATE: 26/07/2012
Minor amendments			
REVISION: *	BY: SR	CHECKED:	DATE: 23/07/2012
Initial issue			

PLANNING

PLOT DATE:

Sainsbury's

CLIENT:
LINLEY LANE
ALSAGER

PROJECT:
PROPOSED
PETROL FILLING STATION
ELEVATIONS

DRAWING: DATE:
DRAWN BY: SR SCALE: 1:100 @ A1 JULY 2012

Hadfield Cawkwell Davidson

Broomgrove Lodge, 13 Broomgrove Rd, Sheffield, S10 2LZ T 0114 266 8181 www.hcd.co.uk

Architecture | Engineering | Interior Design | Masterplanning | Urban Design

DISCIPLINE: ARCH JOB NO: 2010-071 DRAWING NO: A-PL-109 REV: D

S:\Architecture\2010-071\Drawings\DR - Plot Sheets\2024 Planning amendments\A-PL-109_proposed PFS elevations.dwg